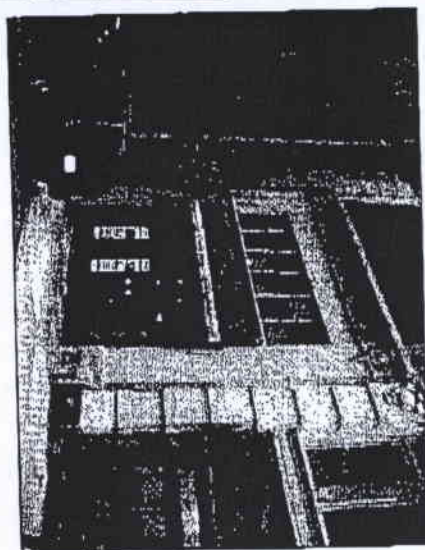
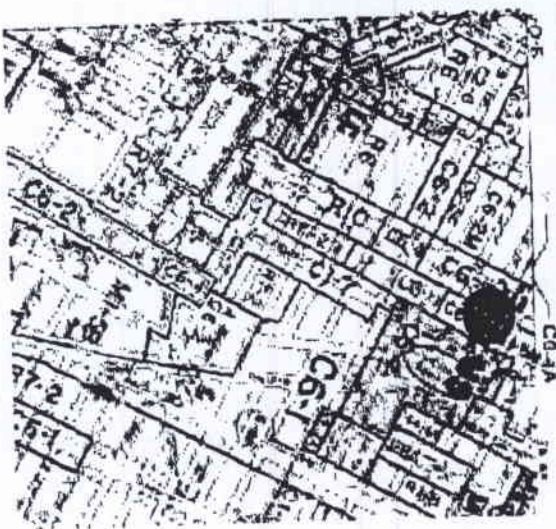
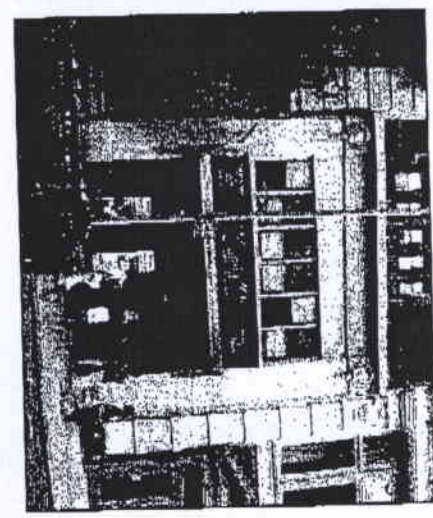


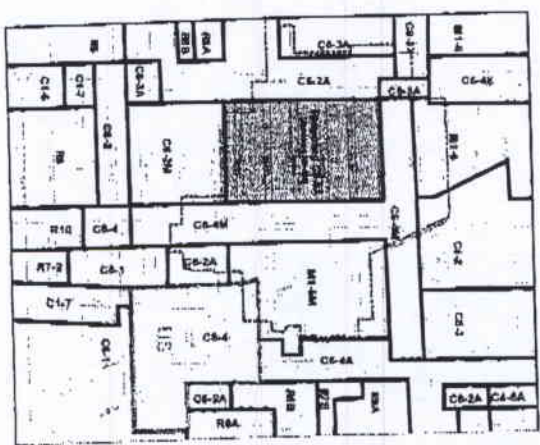
TAX DEPARTMENT PHOTOGRAPH, ca. 1940



CURRENT LOCATION CONDITIONS

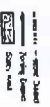


NY CITY ZONING MAP (12C)



LADY'S MILE REZONING MAP

PROPOSED ZONING



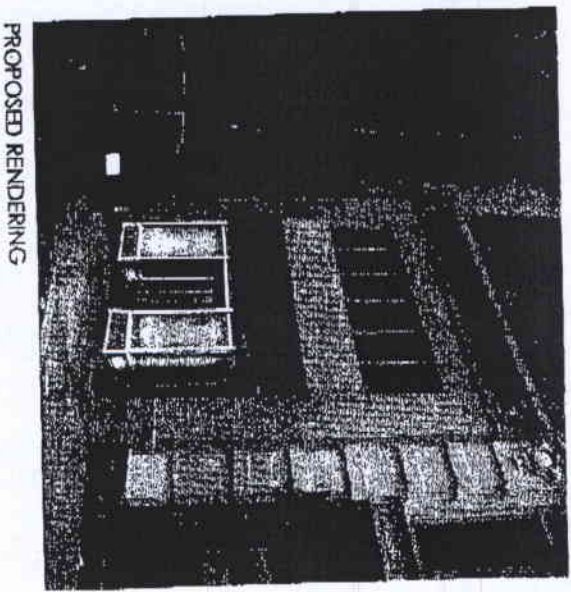
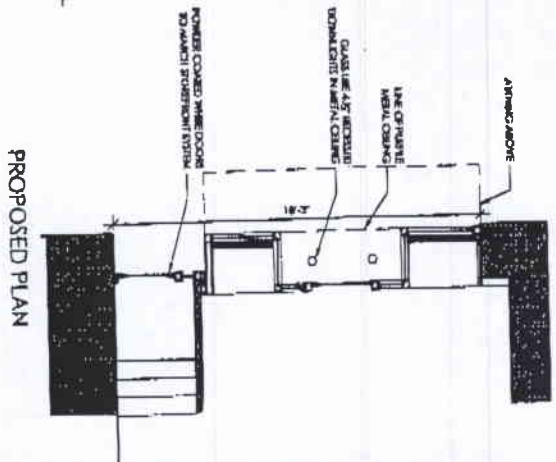
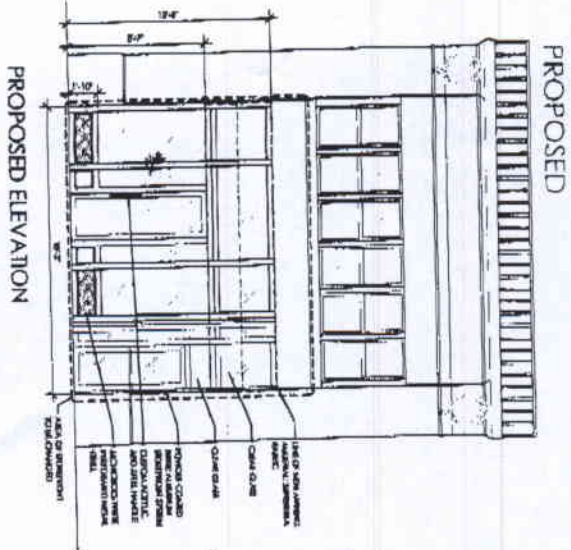
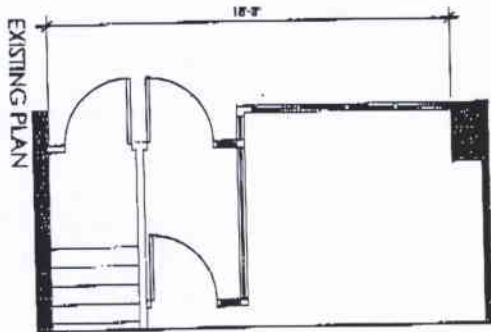
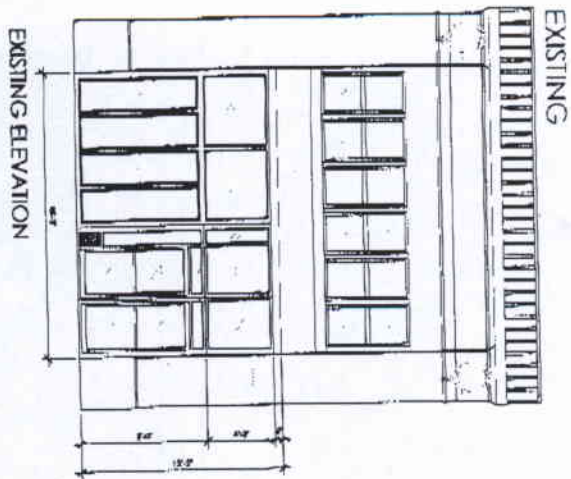
Ladys Mile Rezoning

LDB
LADY'S MILE DISTRICT BOARD

LOFFREDO BROOKS ARCHITECTS P.C.
118 WEST 23RD STREET - 4TH FLOOR
NEW YORK CITY, NEW YORK 10011
TEL 212.698.7729 FAX 212.726.8814
EMAIL: INFO@LDBARCH.COM

JOURNABLE
2 EAST 17TH STREET
NEW YORK CITY, NEW YORK
RECEIVED
11/24/2007

LANDMARK SUBMISSION
STREETS AND AVENUES
RECEIVED
11/24/2007

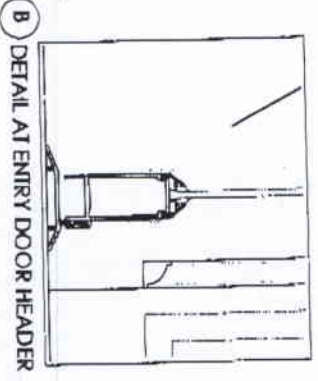
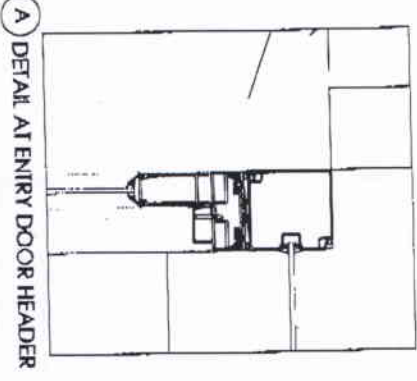
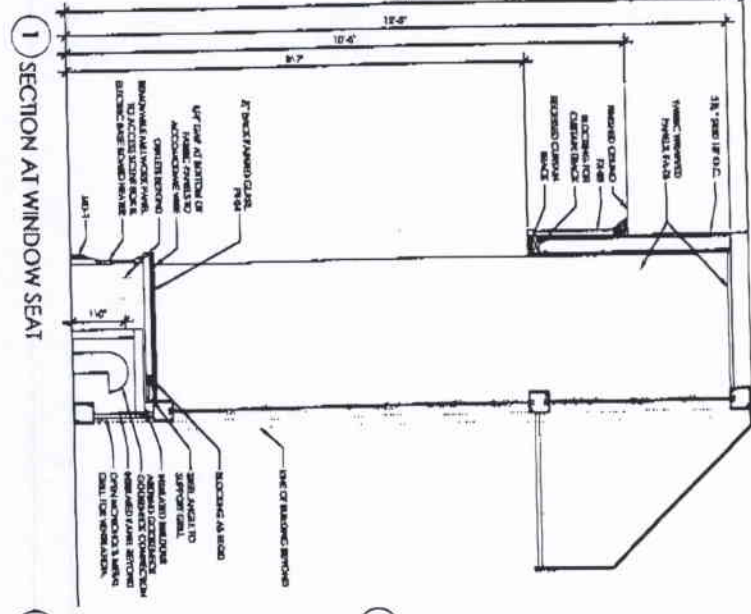
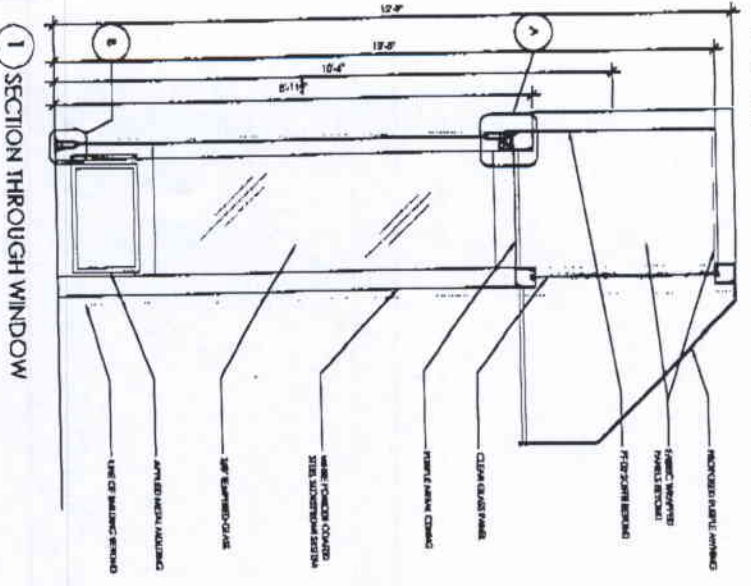


LOFFREDO BROOKS ARCHITECTS P.L.L.C.
 118 WEST 23RD STREET - 4TH FLOOR
 NEW YORK CITY, NEW YORK 10011
 TEL. 202.69.1729 FAX 212.258.9114
 EMAIL: INFO@LBAO.COM

JOURNALBLE
 3 EAST 17TH STREET
 3RD FLOOR LAMP EXHIBIT
 NEW YORK CITY, NY 10011

LANDMARK SUBMISSION
 SECRETION AND APPROVAL
 8/24/07

SECTIONS



MATERIALS

LOFFREDO BROOKS ARCHITECTS P.C.
 115 WEST 29th STREET - 4th FLOOR
 NEW YORK CITY, NEW YORK 10011
 TEL: 212.725.1175 FAX: 212.725.8134
 INFO@LBAO.COM PLO@LBAO.COM

JOURNELLE
 3 EAST 17th STREET
 8th FLOOR AND BATHROOM
 NEW YORK CITY, NEW YORK

LANDMARK SUBMISSION
 STRUCTURAL AND ARCHITECTURAL
 DESIGN
 7/11/07